

# Fall Is the Best Time to Plant!



**WALTON COUNTY  
MASTER GARDENERS**

# UGA

- An Equal Opportunity, Affirmative Action, Veteran, Disability Institution
- If you are an individual with a disability who may require assistance or accommodation in order to participate in or receive the benefit of a service, program, or activity of UGA, or if you desire more information, please contact us.

# What we will learn:

- Why plant in fall
- Important fall activities
- Soil preparation
- General planting instructions
- Preventing winter damage
- Starting a brand-new bed



# When exactly is Fall?

- Officially begins +/- September 21
- Plant between late September-late November
- Final planting – 6 weeks before first frost (November 11-20)



# Good Reasons to Plant in Fall:

**Warm soil + cool air = happy plants**

**Fewer insects & disease pressure**

**Less water stress**

**Planting is more pleasant**

**Plants have a head start for next spring**



# Fall is NOT the End of the Growing Season

- There is plenty of rain in fall, winter, & spring.
- Roots grow all winter.
- Plants will be ready for their spring growth spurt.
- Summer heat & drought are very hard on plants.
- “Best” soil temperature for plants is 55-75° F.
- Plants are often on sale.



# To Find the Soil Temp – georgiaweather.net

The screenshot shows a web browser window displaying the georgiaweather.net website. The browser's address bar shows the URL "georgiaweather.net". The website header includes the "UGA Weather Network" logo and the "College of Agricultural & Environmental Sciences UNIVERSITY OF GEORGIA" logo. A navigation menu contains links for Home, Maps and Summary, Crop Weather, Drought, Calculator, Background Info, Links, Site Map, and Contact us.

The main content area is divided into two columns. The left column has two sections: "Weather Stations" with a dropdown menu labeled "Select a Station" and "Nearest Stations" with a text input field for a GA ZIP Code and a "Check" button. The right column features a map of Kentucky with the text "For current weather conditions, historical weather data and applications, please select a site on the map:". Above the map is a "Choose display value:" dropdown menu set to "Temperature (°F)". The map shows major cities like Lexington, Richmond, Beckley, Blacksburg, Roanoke, Kingsport, Johnson City, Knoxville, Pigeon Forge, and Greensboro, along with highways and national forests.

The Windows taskbar at the bottom shows the search bar, system tray icons, and the date/time "12:53 PM 6/9/2024".

# UGA Weather Network



- Home
- Maps and Summary
- Crop Weather
- Drought
- Calculator
- Background Info
- Links
- Site Map
- Contact us

- Current Conditions >
- Past Data >
- Graph >
- Seasonal >
- Forecast >
- Site Information

**Weather Stations**

Select a station from drop down list below

Select a Station

**The Georgia FFA-FCCLA Center**

Covington, Newton County, Georgia

**Current Conditions**

**Today is Sunday, June 9, 2024. The time is 12:54:59 PM**

**Graph Weather Data**

Conditions at 12:45 PM EDT on June 9, 2024	Data
Temperature	88.2 °F
Relative Humidity	41.9 %
Dew Point Temperature	62.2 °F
Wet Bulb	71.4 °F







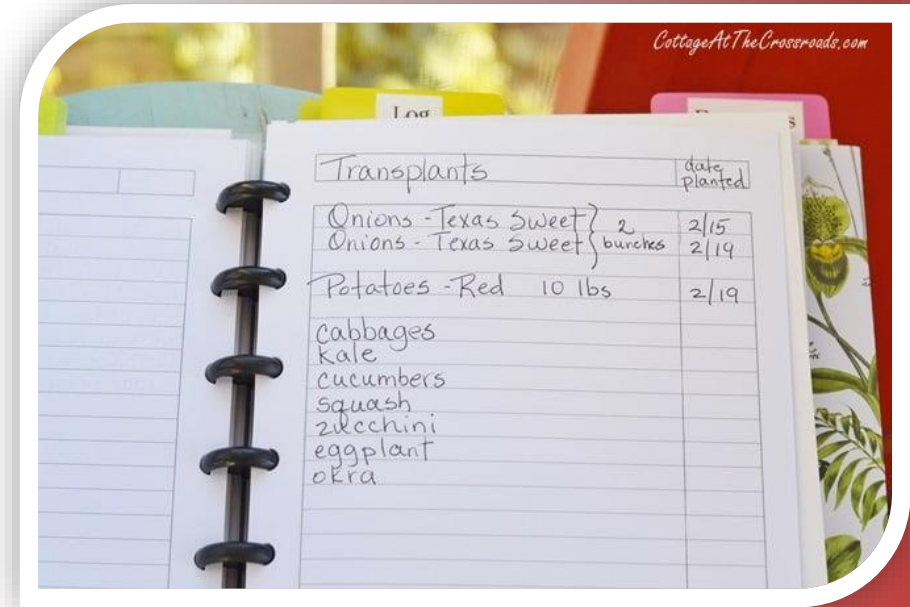
# Scroll down to:

<b>2 Inch Soil</b>	<b>90.4 °F</b>
<b>4 Inch Soil</b>	<b>83.8 °F</b>
<b>8 Inch Soil</b>	<b>79.3 °F</b>
<b>Soil Moisture</b>	<b>15 %</b>



# Important Fall Activities

- Evaluate this year's garden – what worked & what didn't
- Plan changes for next year
- Get a soil test
- Do plants need to be divided?  
Relocated?



# DO Plant in Fall -

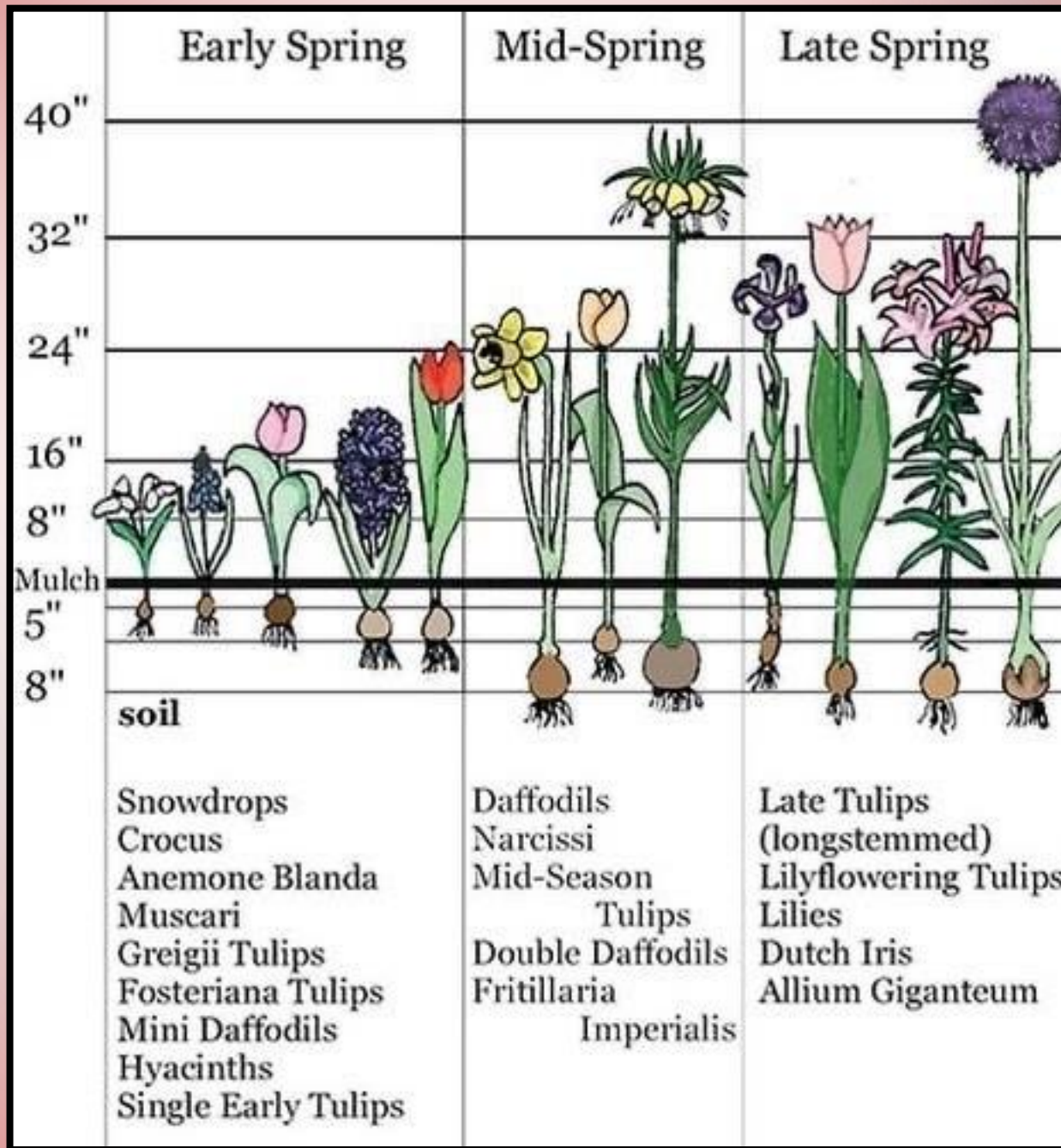
- **Deciduous trees - (buckeyes, dogwoods, maples, oaks, redbuds ...**
- **Winter flowers - (flowering cabbage & kale, dusty Miller, pansies, violas, snapdragons)**
- **Spring-flowering bulbs**
- **Cool season vegetables - (broccoli, cabbage, kale, potatoes)**

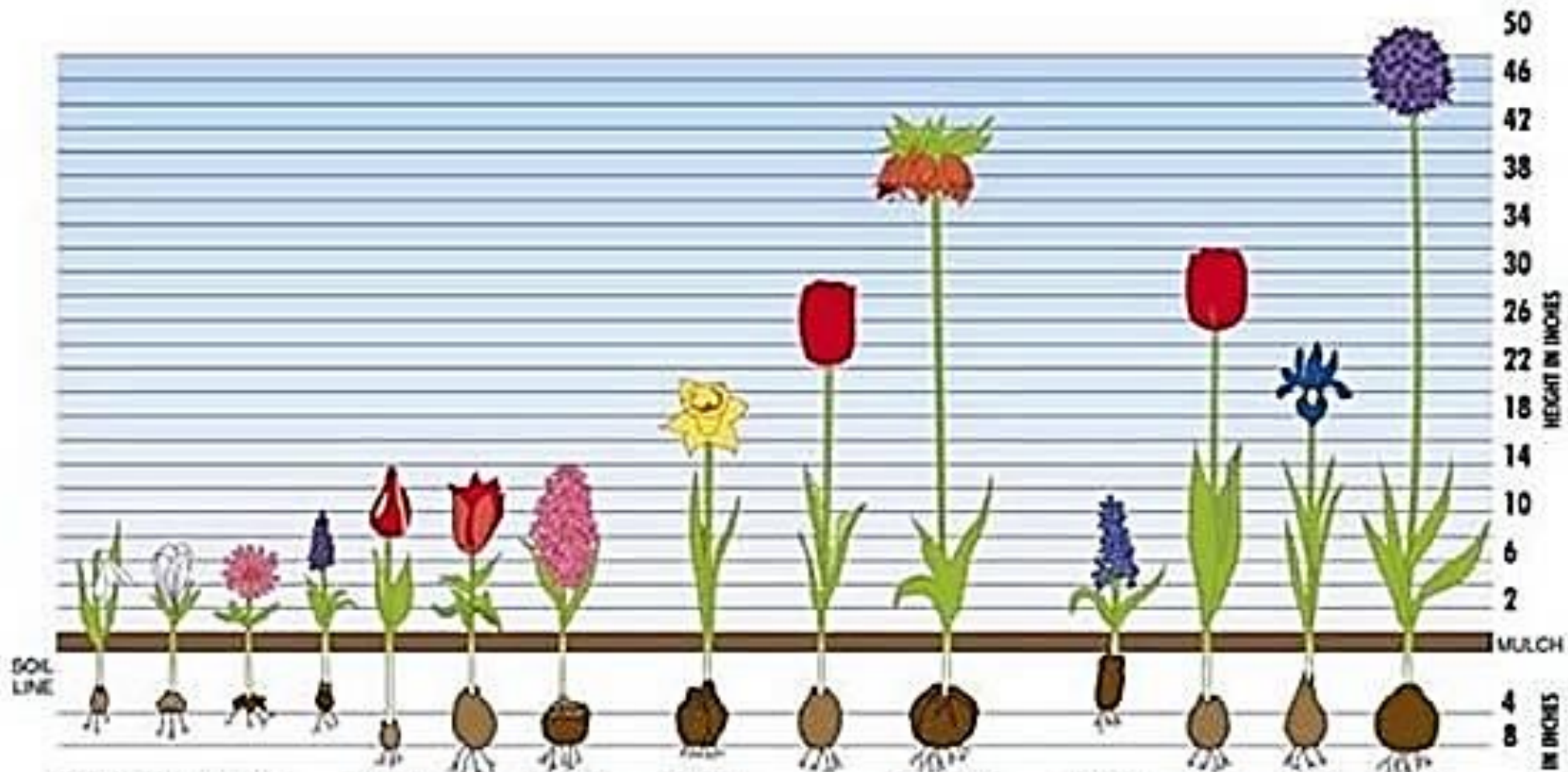


# When planting bulbs ...

- Pointed end should go up
- Flat side should go down
- Plant bulb twice as deep as bulb is high
- (Don't worry if you make a mistake. Bulbs will usually correct this.)







**Will Flower Early Spring**

**Will Flower Mid Spring**

**Will Flower Late Spring**

# DON'T Plant in Fall -

- **Broadleaf evergreens -**  
(azaleas, boxwoods, camellias, hollies, magnolias, rhododendrons)
- **Winter winds can desiccate leaves**



# Soil Preparation Before Planting

- Check site for hazards – buried building supplies, rocks, chemical spills
- Till to break up clay
- Take soil samples.
- Amend soil as recommended.





# If You Can't Plant Immediately ...

- **Keep potted or balled plants in shady area.**
- **Keep roots moist (not soggy)**
- **Water plants well before planting**



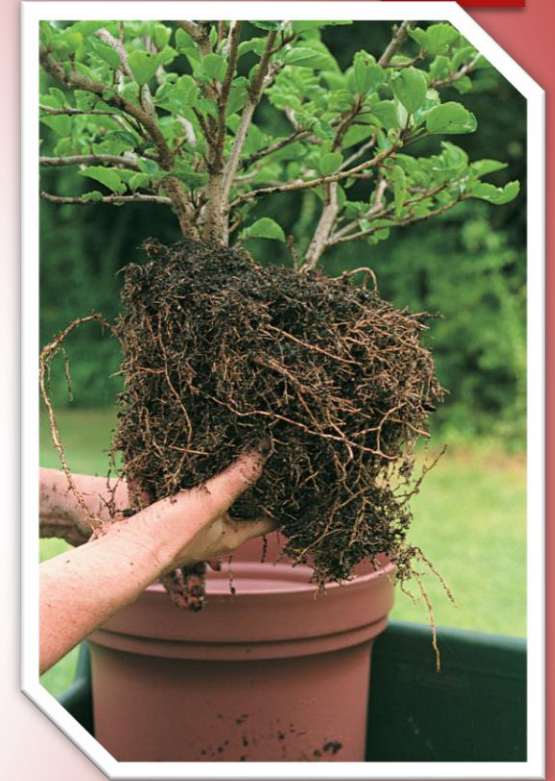
# Basic planting instructions

- Decide if the plant needs full
  - sun, part sun, part shade, or full shade.
  - Find a location that meets those needs.
  - Dig hole wider than root ball (pot) & same depth as root ball or pot.
  - Add water to bottom of receiving hole.
  - Remove plant from pot – carefully.



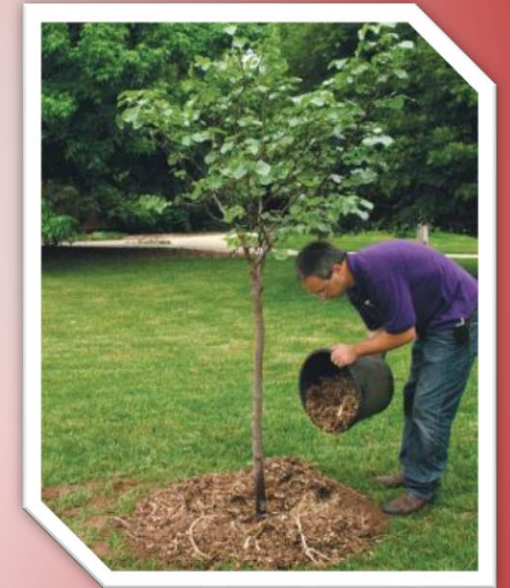
# Basic planting instructions cont'd.

- Injure roots slightly.
- Place plant in center of hole, keeping it level with soil line.
- Backfill around plant. (Soil must be tight against roots.)
- Tamp soil around plant, being careful not to injure roots.



# Basic planting instructions cont'd.

- Water well.
- Place 3" layer of mulch (small wood chips or pine straw) over soil surface. This helps retain moisture & discourages weed growth.
- Do not fertilize until plant is acclimated.



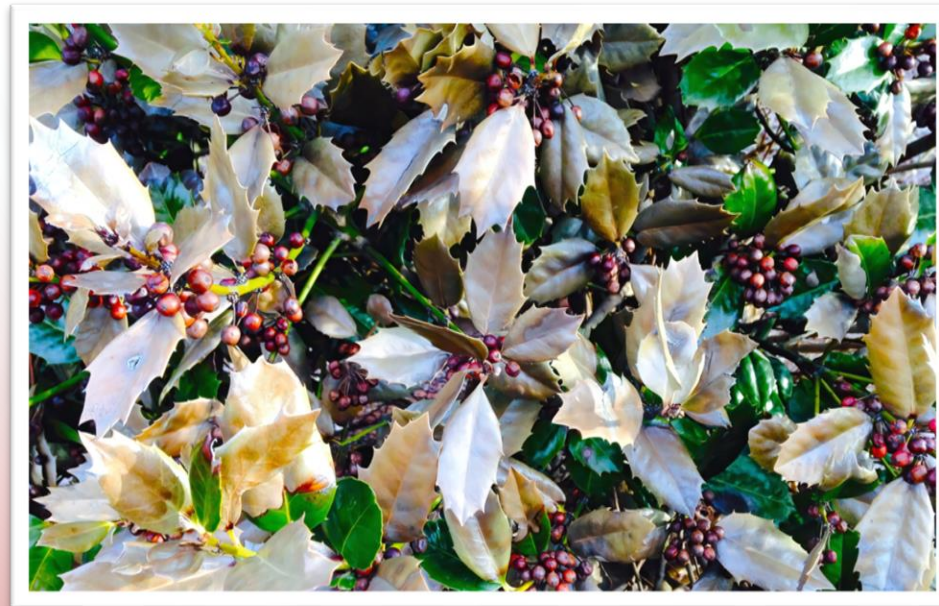
# Care of Newly Planted Ornamentals

- **Water regularly & deeply**
- **Do not fertilize immediately.**
- **Wait till plant is established**



# Winter Damage

- Cold weather can damage all parts of the plant – fruit, stems, leaves, trunk, roots



# Preventing Winter Damage

- Choose plants that can tolerate winter temperatures
- Choose appropriate planting site
- Do not fertilize in late fall
- Don't prune or transplant in late fall



# Protect Plants from Cold & Wind

- Provide windbreaks – fence, building, evergreen plantings, temporary structures – on northwest side of plant
- Mulch
- Cover plant – sheets, blankets, cardboard – NOT plastic
- Group container plants
- Water before a freeze – Moist soil absorbs more heat





**winter protection**

# After a Freeze ...

- **Wait to prune until freeze has passed.**
- **When pruning, cut several inches below damaged tissue.**



# Starting a New Bed without Chemicals

- **Decide where to locate your bed – consider sun/shade, vertical & horizontal space**



- **Mow grass (weeds) as short as possible**

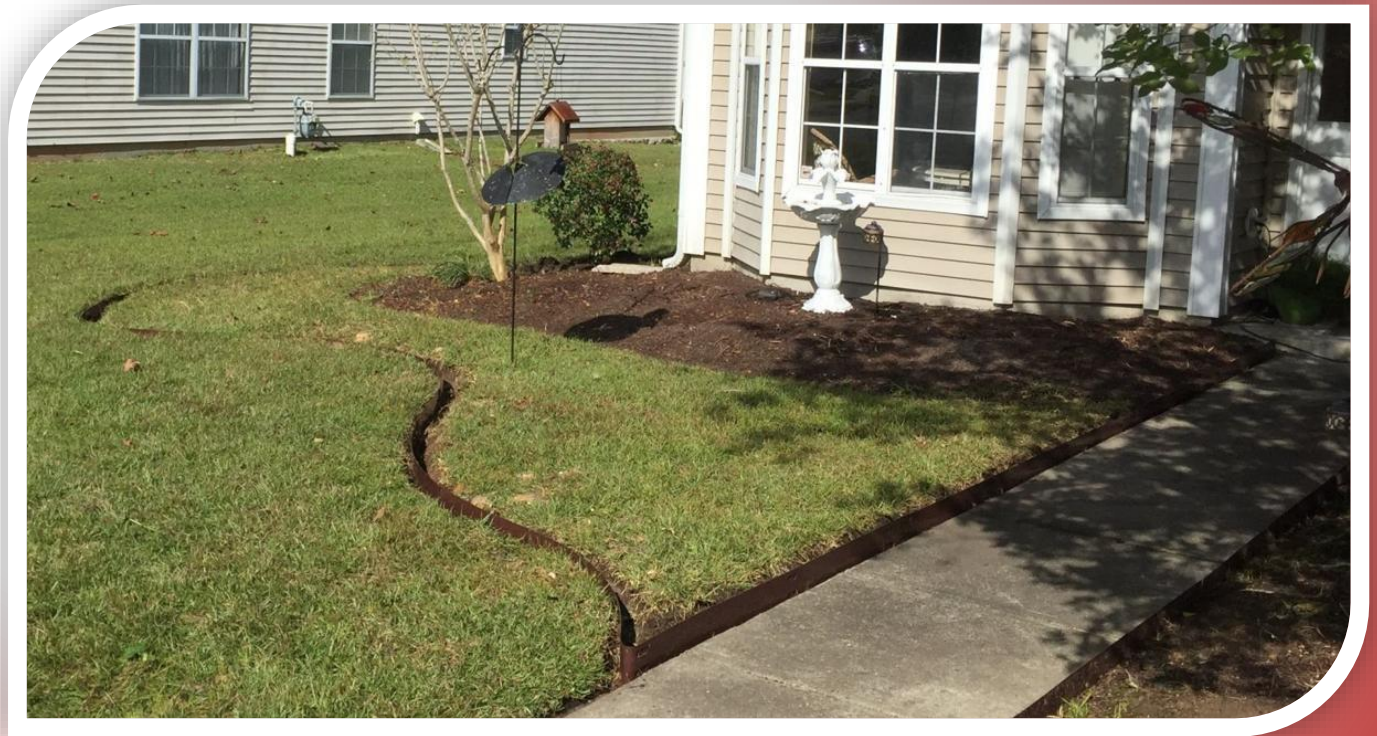
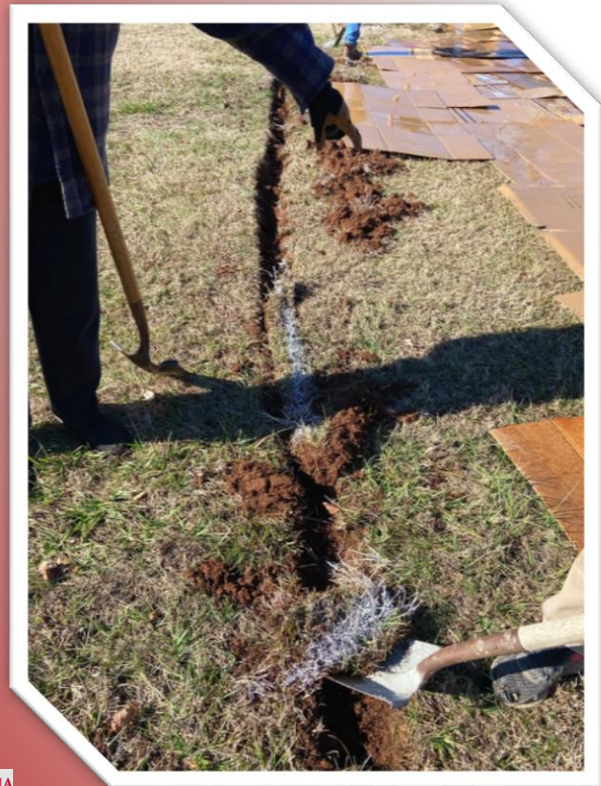




- Lay out lines for bed edges
- Spray paint around perimeter



- **After marking perimeter, dig a trench the width of the painted line**



- Lay one or more layers of flattened cardboard



- **Thoroughly wet the cardboard**





- Cover the cardboard with 3-4" of mulch





- **Now you wait – preferably till spring**



- **Next spring, till mulch & cardboard into soil**



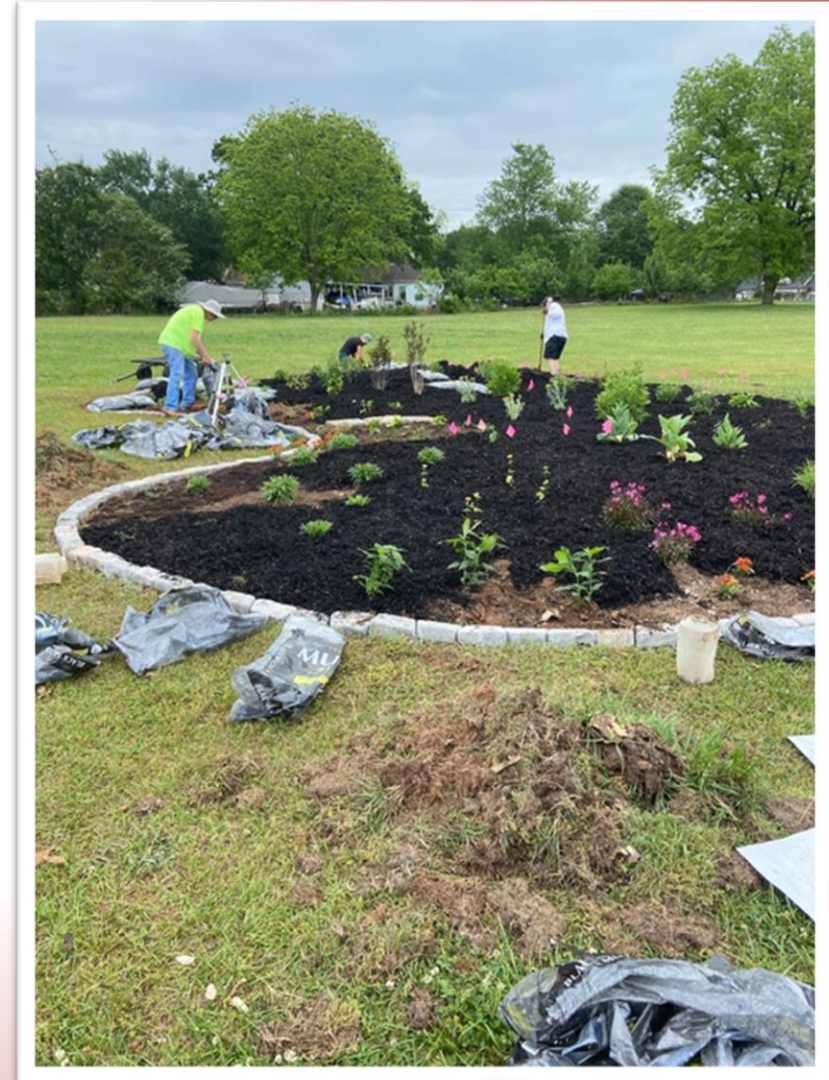
# ■ Planting Day



- **Edging stones can give your bed a polished appearance**



- After you finish planting ... mulch again



# the garden in July:





# Too Many Steps?

- You can eliminate the tilling & just plant directly into the compost/cardboard/native soil





*Walton County Master Gardeners invite you to*  
**Free Fall 2024 Gardening Talks**

**Mondays 2:00–3:00 p.m.**  
**O’Kelly Memorial Library**  
**363 Conyers Road, Loganville GA**

**Sept 9: Exploring Succulents**

**Sept 16: Putting the Garden to Bed  
for the Winter**

**Sept 23: Fall is the Best Time to Plant!**

**Sept 30: Hügelkultur—An Ancient  
Way to Garden**

**Oct 7: Powerhouse Sun Perennials**



Scan the code  
to sign up for  
our monthly  
newsletter



*Walton County Master Gardeners invite you to*  
**Free Fall 2024 Gardening Talks**

**Tuesdays 4:00–5:00 p.m.**

**W.H. Stanton Memorial Library  
407 W. Hightower Trail, Social Circle GA**

**Sept 10: Exploring Succulents**

**Sept 17: Putting the Garden to Bed  
for the Winter**

**Sept 24: Fall is the Best Time to Plant!**

**Oct 1: Hügelkultur—An Ancient  
Way to Garden**

**Oct 8: Powerhouse Sun Perennials**



Scan the code  
to sign up for  
our monthly  
newsletter



*Walton County Master Gardeners invite you to*  
**Free Fall 2024 Gardening Talks**

**Wednesdays 2:00–3:00 p.m.**

**New UGA Extension Office  
1258 Criswell Rd SE, Monroe GA**

**Sept 11: Exploring Succulents**

**Sept 18: Putting the Garden to Bed  
for the Winter**

**Sept 25: Fall is the Best Time to Plant!**

**Oct 2: Hügelkultur—An Ancient  
Way to Garden**

**Oct 9: Powerhouse Sun Perennials**



Scan the code  
to sign up for  
our monthly  
newsletter

Join us  
most  
Saturdays  
at the  
Monroe  
Market



# Questions?

**Walton County Extension  
1258 Criswell Rd SE  
Monroe, GA 30655  
M-F – 8 AM to Noon/1PM to 5 PM**

**Help Desk Hours – Tuesday 1 to 4  
PM**

**Visit our booth at Monroe Market  
for help with gardening questions.**

**Contact us at  
[waltonmg@uga.edu](mailto:waltonmg@uga.edu)  
770-267-1324**



# Support our Two Fundraisers



Scan the QR Code  
to buy a brick



Use Fundraising Code  
WaltonMG2024

# Have More Questions? Need Help?

Contact us at [waltonmg@uga.edu](mailto:waltonmg@uga.edu)  
770-267-1925



**Walton County Extension**  
1258 Criswell Rd.  
Monroe, GA 30655

**Office hours: Monday - Friday**  
8:00 am-Noon & 1:00-5:00 pm

**MG Help Desk hours:**  
Tuesdays  
1:00-4:00